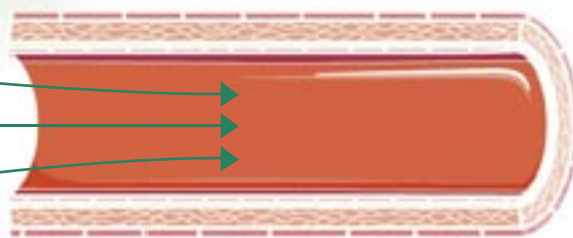


Développement athérosclérose

COUPE LONGITUDINALE

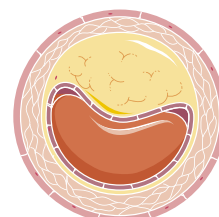
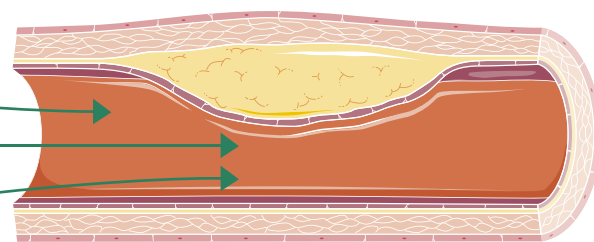
COUPE TRANSVERSALE

LE FLUX SANGUIN



Artère normale

LE FLUX SANGUIN DIMINUE

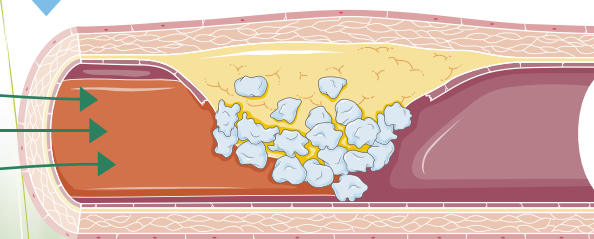


Athérosclérose :
Une plaque (thrombus) se forme



Thrombus grossit

LE FLUX SANGUIN EST STOPPÉ



Angor

Infarctus

AVC

Athérothrombose